



**Operating Instructions Manual**

**Pneumatic Rivet Nut Setting Tool**

**48-2980**



Read through this operating instructions manual carefully before using the product. Protect yourself and others by observing all safety information, warnings, and cautions. Failure to comply with instructions could result in personal injury and/or damage to product or property. Please retain instructions for future reference.

## INTENDED USE OF THE TOOL

This tool is intended to be used to set M4-M10 and 1/4"-3/8" aluminum and steel rivet nuts and stainless steel rivet nuts up to 1/4" (M6). Operate only at the required or recommended air pressure necessary. Do not over-set rivet nuts. Do not use these tools outside of the designed intent. Never modify the tool for any other purpose or use.

## PRODUCT INFORMATION

- Includes 8 mandrels / nosepieces in the following sizes: M4, M5, M6, M8, M10, 1/4", 5/16", 3/8".
- Instantly set rivet nuts with the pull of the trigger. Up to 3/8" (M10) capacity for aluminum or steel rivet nuts.
- Free-spinning rear wheel quickly releases the tool from the rivet nut after setting.
- 2680lbs of instant air-hydraulic pulling force.

## SPECIFICATIONS

Pulling Force: 2680 lbs. (1219 kgs)	Work Capacity: up to 3/8" (M10) in aluminum & steel rivet nuts up to 1/4" (M6) in stainless rivet nuts
Tool Stroke: 6.5 mm	
Air Consumption: 3 CFM	Air Inlet: 1/4" NPT
Operating Air Pressure: 180 PSI	Weight: 3.59 lbs. (1.63 kgs)

## BEFORE USE

When unpacking, check the parts diagram and part number listing on page 5-6 to make sure all parts are included. If any parts are missing or damaged, please call your distributor.

## MAINTENANCE INSTRUCTIONS

### 1. LUBRICATION:

Lubricate the tool daily with a high-quality air tool oil. If no inline oiler is used, run a teaspoon of oil through the tool. The oil can be added into the tool air inlet or into the hose at the nearest connection to the air supply, then run the tool.

### 2. TIGHTNESS OF PARTS:

Regularly check whether all connecting parts are fastened securely. Follow this procedure daily before beginning work.

### 3. STORAGE:

Avoid storing the tool in a location subject to high humidity. If the tool is left unused, the residual moisture inside the tool can cause rust. Before storing and after operation, oil the tool at the air inlet with a good quality air tool oil and run it for a short period.

### 4. REPAIR & SERVICING:

For further operational and handling information or for replacement of parts and components, contact your Kimball Midwest Sales Representative or Power Tool Repair (371 West Ave. Tallmadge, OH 44278, 330-630-0022).

---

Users of this tool should review the chemical composition of the work surface and any products used in conjunction with this tool for any hazardous chemicals prior to engaging in any activity that creates dust and/or microscopic particles.

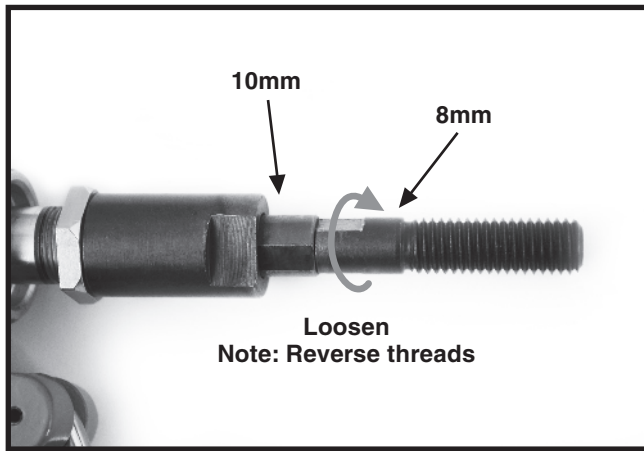
Users should obtain the Safety Data Sheets for all identified chemicals, either from the manufacturer or their employer, and proceed to study, understand, and follow all instructions and warnings for exposure to such chemicals.

Some examples of these chemicals are: lead from lead based paints; crystalline silica from bricks, cement and other masonry products; and arsenic and chromium from chemically treated lumber. A listing of the chemicals can be obtained at [www.oehha.ca.gov](http://www.oehha.ca.gov) under Proposition 65.

In order to reduce their exposure to such chemicals, users should always:

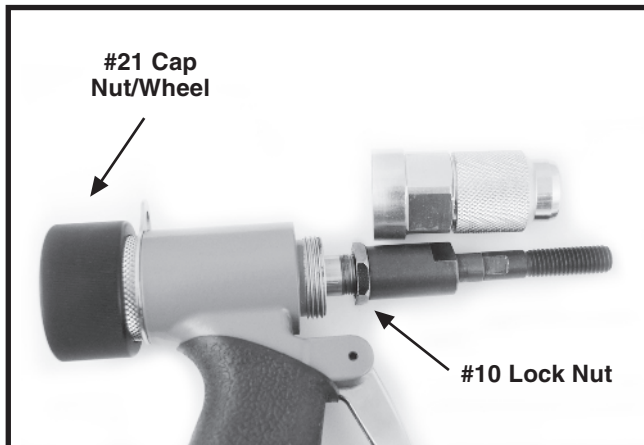
- work in well-ventilated areas.
- wear appropriate safety equipment and PPE that are specifically designed to filter out microscopic particles.

## DISASSEMBLY:



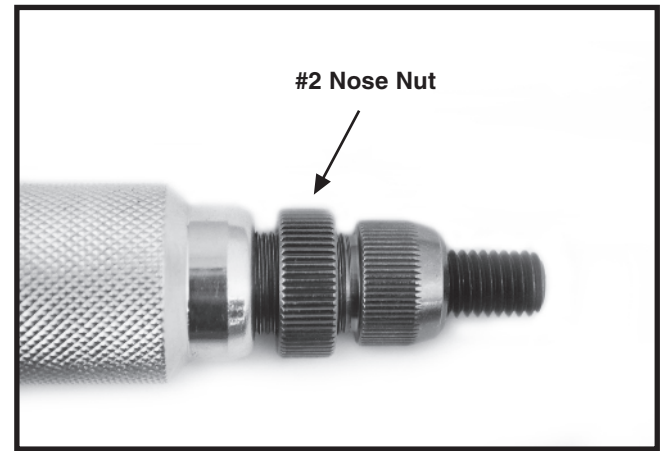
Use the provided wrenches or a 10mm and 8mm wrench to loosen the mandrel from the tool by turning it clockwise due to the reverse threads.

## ADJUSTMENT:



Adjustment of the stroke may be necessary at times based on the application, however make sure the #10 Lock Nut is adjusted far enough forward (and not too far back) so that the #4 connector housing relieves enough spring pressure when installed to allow the #21 Cap Nut/Wheel to freely spin. **If the rear spinning wheel does not spin freely, adjust the #10 lock nut and #7 Spindle Guide until it does move freely with the #4 housing installed.**

## NOSE NUT:



Install the #2 Nose Nut on each new nosepiece to be used. Adjust to lock the nosepiece in place closer or further away as needed. The further away from the tool the nosepiece is locked into place, the more the stroke will be applied to the rivet nut and/or the less the rivet nut can be threaded onto the mandrel.

**DO NOT OVER SET RIVET NUTS, ONLY ADJUST NOSEPIECES FORWARD AND INCREASE AIR PRESSURE AT REGULATOR AS NEEDED. OVER SETTING RIVET NUTS CAN CAUSE DAMAGE TO YOUR WORKPIECE AND/OR THIS TOOL.**



Read the  
owners manual  
before use



Wear Safety  
Gloves



Wear Eye  
Protection



Wear Ear  
Protection



Wear  
Dust Mask

## SAFETY PRECAUTIONS:

Never use the tool for any application for which it was not designed. Never alter or modify the tool or the components. Improper operation or modification could result in serious injury.

## WARNING

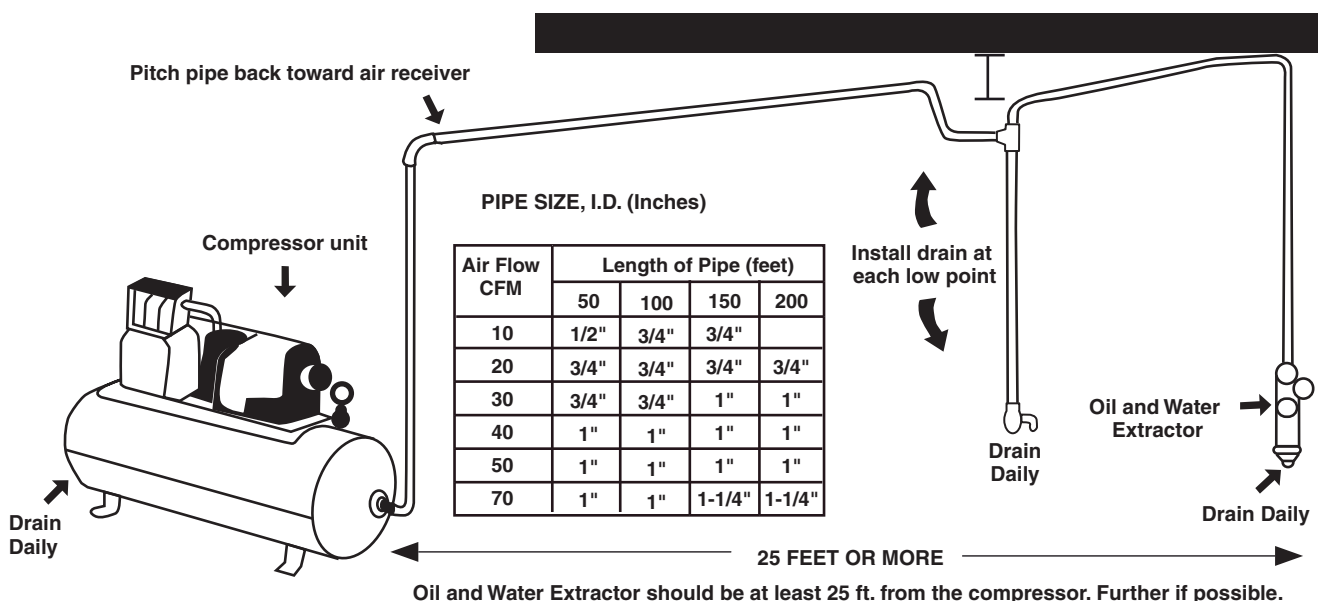
1. The tool shall not be used in potentially explosive atmosphere.
2. Disconnect the air hose before changing or adjusting any inserted tools.
3. Before using tool, please confirm all couplings and plugs are fixed securely. An air hose that is under pressure may lash out when disconnected and could lead to serious injuries.
4. Prevent loose clothes, long hair or any other personal accessories from coming close to moving parts to reduce the risk of being caught, trapped or drawn into the rotating spindle.
5. Excessive high air pressure that exceeds the maximum pressure may cause injuries to user or damage to the tool.
6. Exposure to strong vibration for extended time may cause harm to operator.
7. Be aware of the rotation direction before starting the tool to reduce hazardous situations due to unexpected rotation direction.
8. **WATCH YOUR STEP!** Leaving excess hose unattended near working area or walk path could result in injury or death.
9. Wearing eye/face protection could reduce the danger to person from high speed splinters being emitted from the tool or work surface.
10. Wearing correct breathing protection will help avoid inhaling dust or debris from work process that can be harmful to your health.
11. High sound levels can cause permanent hearing loss. Use hearing protection while operating tool.
12. Depending on the material being processed, there may be a risk of explosion or fire.  
Be aware of work surface dangers prior to beginning work.
13. This power tool is not insulated. If contact is made with an electric current, injury may occur.
14. Dust created by sanding, sawing, grinding, drilling and other related activities may expose the user to dust and/or microscopic particles that may contain chemicals known to the State of California to cause cancer, birth defects or other reproductive harm.

The oil and water extractor should not be mounted on or near the air compressor.

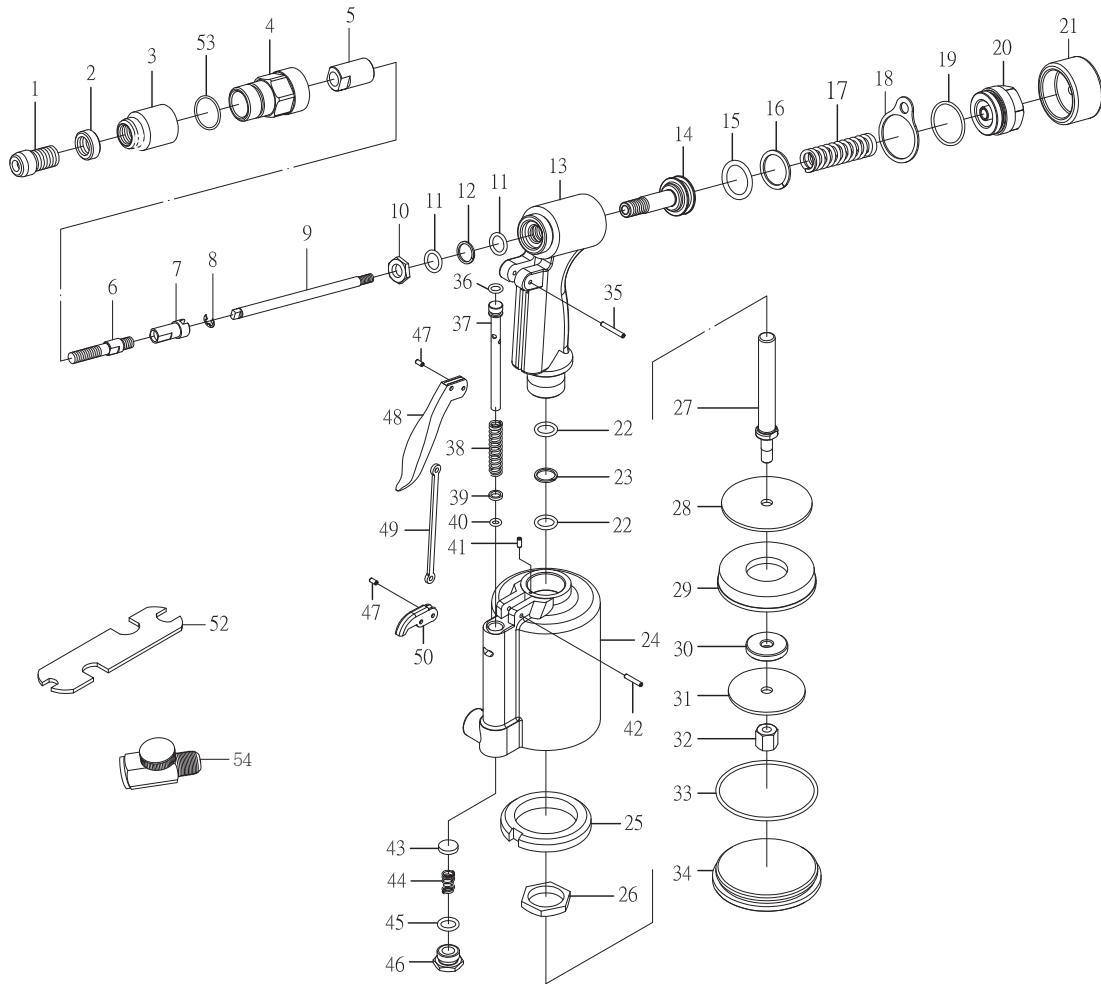
The temperature of air is greatly increased during compression. As the air cools down to room temperature, in the air line, on its way to the air power tool, the moisture contained in it condenses. Thus, for maximum effectiveness, the oil and water extractor should be mounted at some point

in the air supply system where the temperature of the compressed air in the line is likely to be lowest. Air lines must be properly drained daily. Each low point in an air line acts as a water trap. Such points should be fitted with an easily accessible drain. See diagram below. Pitch all air lines back towards the compressor so that condensed moisture will flow back into the air receiver where it can be drained off.

## SUGGESTED AIR LINE CONNECTION



## PARTS BREAKDOWN



### Parts List

Index	Description	Qty
1	Nosepiece, M4	1
	Nosepiece, M5	1
	Nosepiece, M6	1
	Nosepiece, M8	1
	Nosepiece, M10	1
	Nosepiece, 1/4	1
	Nosepiece, 5/16	1
	Nosepiece, 3/8	1
2	Nose Nut	1
3	Stroke Adaptor Cover	1
4	Connector Housing	1
5	Jaw Case, Rear	1
6	Screw Mandrel (M4)	1
	Screw Mandrel (M5)	1
	Screw Mandrel (M6)	1
	Screw Mandrel (M8)	1
	Screw Mandrel (M10)	1
	Screw Mandrel (1/4)	1
	Screw Mandrel (5/16)	1
	Screw Mandrel (3/8)	1
7	Spindle Guide	1
8	E Ring	1

Index	Description	Qty
9	Return Tube	1
10	Lock Nut	1
11	O-Ring	2
12	Backup Ring	1
13	Frame	1
14	Piston	1
15	O-Ring	1
16	Backup Ring	1
17	Piston Ring	1
18	Hanging Clip	1
19	O-Ring	1
20	Frame Cap	1
21	Safety Cap Nut	1
22	O-Ring	2
23	Backup Ring	1
24	Cylinder	1
25	Rubber Cushion	1
26	Lock Nut, Frame	1
27	Stem, Air Piston	1
28	Plate, Large	1
29	Piston Ring	1
30	Washer	1

Index	Description	Qty
31	Plate, Small	1
32	Lock Nut, Piston	1
33	O-Ring	1
34	Cap, Cylinder	1
35	Spring Pin	1
36	Spring Pin	1
37	Pusher, Valve	1
38	Spring, Valve	1
39	Collar, Valve	1
40	O-Ring	1
41	Spring Pin	1
42	Spring Pin	1
43	Valve	1
44	Spring, Valve	1
45	O-Ring	1
46	Cap, Valve	1
47	Spring Pin	2
48	Trigger	1
49	Trigger Rod	1
50	Trigger Lever	1
52	Spanner	2
53	O-Ring	1
54	Brass Regulator	1

**⚠ WARNING:** Cancer and Reproductive Harm – [www.p65warnings.ca.gov](http://www.p65warnings.ca.gov).

**LIMITED WARRANTY:**

Kimball Midwest warrants to the original buyer ("Buyer") all parts and accessories purchased by it from Kimball Midwest against defects in material or workmanship.

Kimball Midwest will repair or replace, at no charge to the buyer, this tool which, after examination by Kimball Midwest, is determined to be defective within a period of 1 year from receipt.

Coverage under this warranty will be provided only if the defective tool has been submitted to Kimball Midwest for inspection.

This warranty does not cover any damage to this tool due to alteration, modification, improper installation, accident, postinstallation misuse, abuse, negligence, inadequate maintenance, or malfunction of associated parts or equipment not supplied by Kimball Midwest.

This warranty is in lieu of any other warranty, expressed or implied, including any warranty of merchantability or fitness for a particular purpose. Replacement or repair as provided under this warranty is the exclusive remedy of the buyer. Kimball Midwest shall not be liable for any incidental or consequential damages resulting from breach of this warranty. Kimball Midwest neither assumes, nor authorizes any person to assume for it, any other liability in connection with the sale of its products.

If this Kimball Midwest Product proves defective in material or workmanship within one year after purchase, contact the Kimball Midwest Quality Assurance Department at [All-QualityAssurance@kimballmidwest.com](mailto:All-QualityAssurance@kimballmidwest.com)

Manufactured For:  
**Kimball Midwest**  
4800 Roberts Road  
Columbus, OH 43228  
1-800-233-1294  
[www.kimballmidwest.com](http://www.kimballmidwest.com)